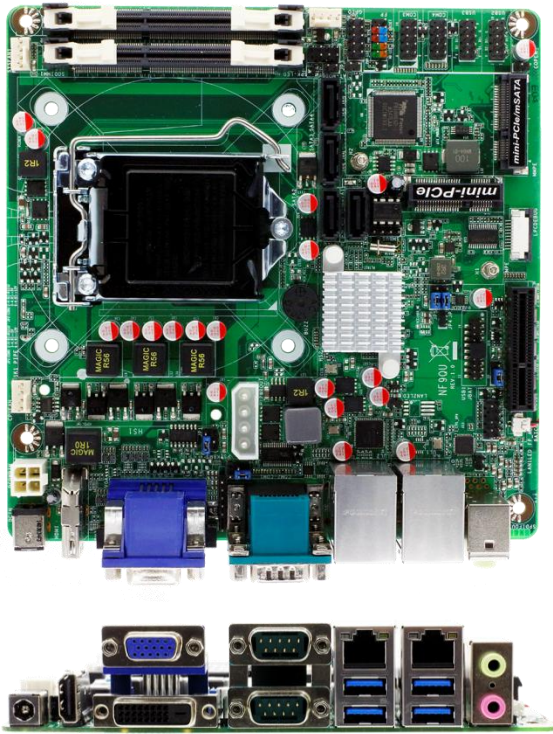


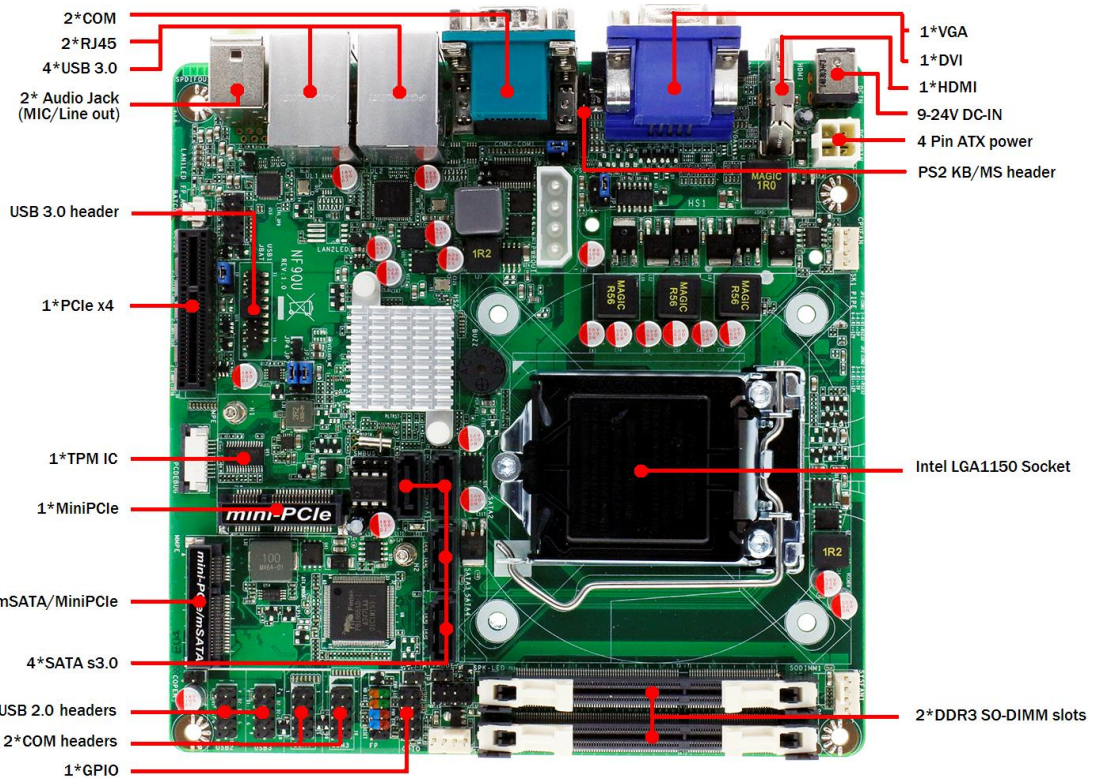
NF9QU-Q87

Mini-ITX Industrial Motherboard LGA1150 2 Intel LAN / 5 COM / USB 3.0 / +9V ~ +24V DC



Features

1. Long-Life Embedded Industrial Motherboard with Planned Lifecycle Through Q4'2018
2. Socket LGA1150 Supporting 4th Generation Intel Core i3, i5, i7 Processors (Haswell), Intel Q87 Express Chipset
3. Intel HD Graphics, DirectX 11.1
4. Supports up to 3 Displays, HDMI, DVI-D, VGA
5. Supports DDR3-1600 SODIMM up to 16GB Total
6. 4 * SATA3 6Gb/s Ports Supporting RAID 0, 1, 5, 10, JBOD
7. 1 * mSATA/mini-PCIE Shared Slot, 1 * mini-PCIE Slot
8. Dual Intel Gigabit LAN, Intel v-Pro & iAMT 9.0 Support
9. 1 * PCI Express 3.0 x4, HD Audio
10. 4 * Serial Ports (2-EXT, 2-INT), 8-bit GPIO
11. 6 * USB 3.0 Ports, 4 * USB 2.0 Ports, Watchdog Timer
12. Nuvoton TPM IC Onboard
13. +9V ~ +24V DC-in or 4-pin Internal Power Connector
14. Compatible with Win 7, Win 8.1, Linux
15. Mini-ITX Form Factor (170mm x 170mm)



www.ibtpanelpc.com



eMail: info@ibtpanelpc.com
Toll Free: 1(866) 590-4288

IBT Technologies inc.
Tel. (514) 832-0808 Fax. (514) 832-0128

Model / Series	<ul style="list-style-type: none"> NF9QU
Part No	<ul style="list-style-type: none"> JNF9QU-Q87
Processor	<ul style="list-style-type: none"> Socket LGA1150, Supports 4th Generation Intel Core i3, i5, i7 processors (Haswell)
Chipset	<ul style="list-style-type: none"> Intel Q87 Express chipset
Video	<ul style="list-style-type: none"> Intel HD Graphics in processor, DirectX 11.1, OpenGL 4.0
Memory	<ul style="list-style-type: none"> 2 * 204-pin SO-DIMM slots supporting dual channel DDR3-1600 up to 16GB total
Expansion Slots	<ul style="list-style-type: none"> 1 * PCI Express 3.0 x4 slot 1 * PCI Express mini card slot (half-size)
Storage	<ul style="list-style-type: none"> 4 * SATA3 6Gb/s ports supporting RAID 0, 1, 5, 10 , JBOD 1 * mSATA/mini-PCI Express shared slot (Full-size)
Audio	<ul style="list-style-type: none"> Realtek ALC662 5.1 Channel HD Audio
Network	<ul style="list-style-type: none"> 1 * Intel i211AT Gigabit LAN 1 * Intel i217LM Gigabit LAN with v-Pro & iAMT 9.0 support
Other Features	<ul style="list-style-type: none"> Support ACPI S3, CPU Smart FAN, Watchdog Timer 10-255 min/sec
Rear Panel I/O	<ul style="list-style-type: none"> 4 * USB 3.0 ports, 2 * RJ-45 ports 2 * Serial ports (2 * RS232/422/485) 1 * HDMI, 1 * DVI-D, 1 * VGA, 2 * Audio jacks (Line Out, Mic In) +9 ~ +24V DC-in jack (1-pin 2.5mm ID, 5.5mm OD)
Internal I/O	<ul style="list-style-type: none"> 1 * USB header for 2 * USB 3.0 ports 2 * USB headers for 4 * USB 2.0 ports AT/ATX power switch mode jumper, Nuvoton TPM IC onboard 2 * Serial headers (2 * RS232), 1 * PS2 KB/MS header 8-bit GPIO header, SMBUS header, Chassis Intrusion header 4-pin Internal alternate power connector
BIOS	<ul style="list-style-type: none"> AMI UEFI 64MB DIP Flash ROM
Box Contents	<ul style="list-style-type: none"> NF9QU Motherboard, SATA Cable, RS232 Cable, Internal Power Cable, Manual, DVD Driver Disk, I/O Shield
Certification	<ul style="list-style-type: none"> CE, FCC, RoHS, ErP
Temperature	<ul style="list-style-type: none"> Operating Temperature 0~60 ° C, Storage Temperature -20-85 ° C
Form Factor	<ul style="list-style-type: none"> Mini-ITX Form Factor (170mm x 170mm)
Warranty	<ul style="list-style-type: none"> 2 Years Limited Warranty

*Specifications subject to change without notice, not responsible for typographical errors.



www.ibtpanelpc.com

eMail: info@ibtpanelpc.com **iBT Technologies inc.**
Toll Free: 1(866) 590-4288 Tel. (514) 832-0808 Fax. (514) 832-0128